



NOMAD

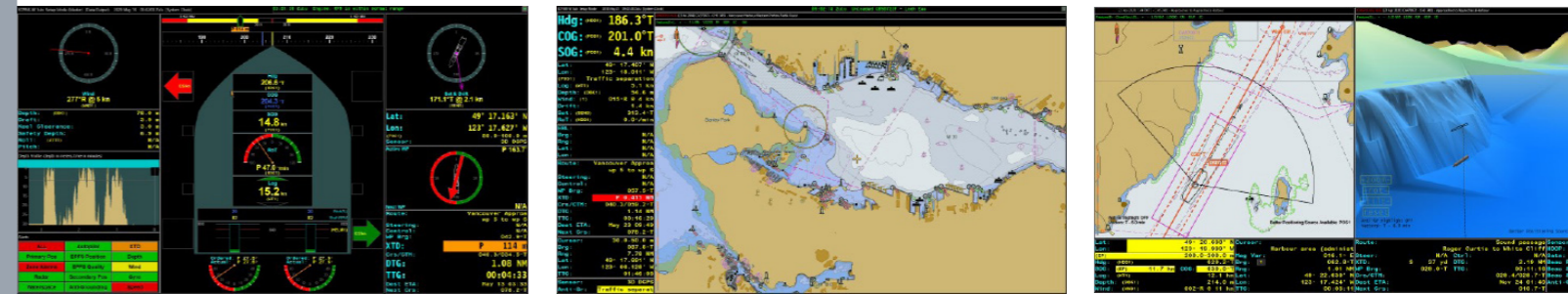
Naval Operations Mobile Augmented Display





Why NOMAD?

- Mobility
- Augmented Situational Awareness
- Efficiency of Effort
- Platform Safety
- Multi-use Remote Access System
- Data Sharing
- Operational Risk Management
- Command & Control Interface



ECPINS

from anywhere on the ship

ECPINS is a computerized, shipboard navigational aid that displays the vessel's position in real time alongside other sensor, or operational, data.

ECPINS exceeds the standards for safe navigation: it is more than an ECDIS.

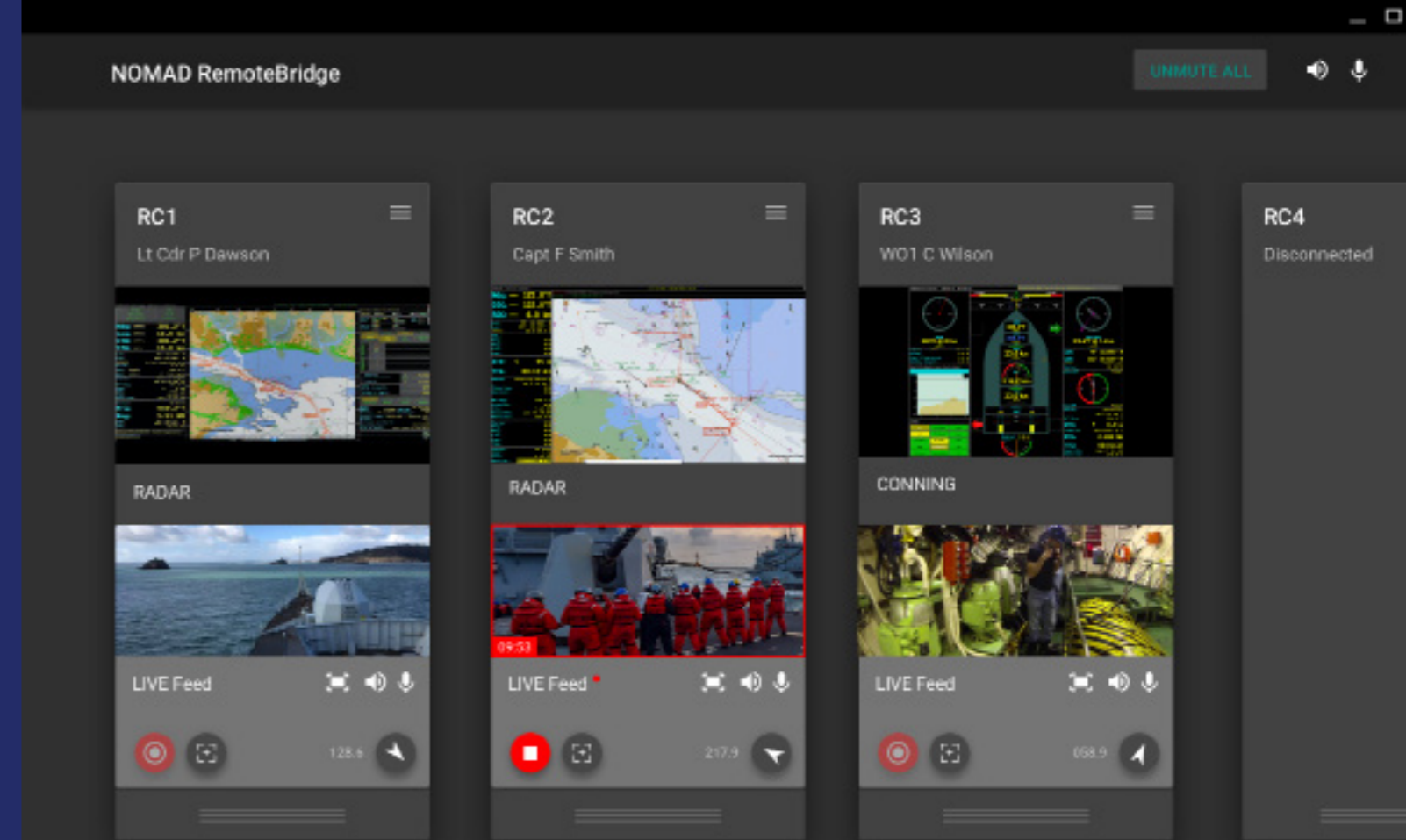
[ECPINS Warship](#) and [ECPINS Submarine](#) are both IMO approved and are independently verified against the NATO WECDIS STANAG 4564.



OSI offers a variety of optional software capability modules and features that extend ECPINS main capabilities in navigation and situational awareness.

Customers have the option of purchasing any selection of these modules for fleet-wide or platform-specific use.

remote hands-free operation



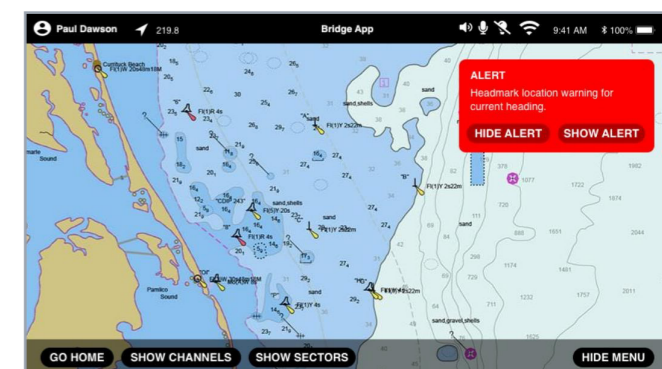
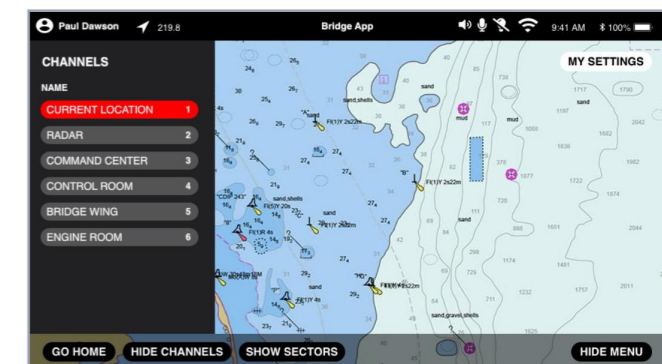
Showing 3 Users of NOMAD: connected; inter-connected; operating and sharing information, concurrently and independently.

bridge operation

As a [wearable mobile information display system](#), NOMAD greatly enhances the effectiveness of the operational user ([CO/NO/OOW](#)) when conducting navigation tasks or gaining situational awareness, both within the confines of a bridge or remotely.

NOMAD can deliver [full, real-time bridge navigation](#) and library data, video and voice communications to selected users on the platform or to other remote users via approved networks.

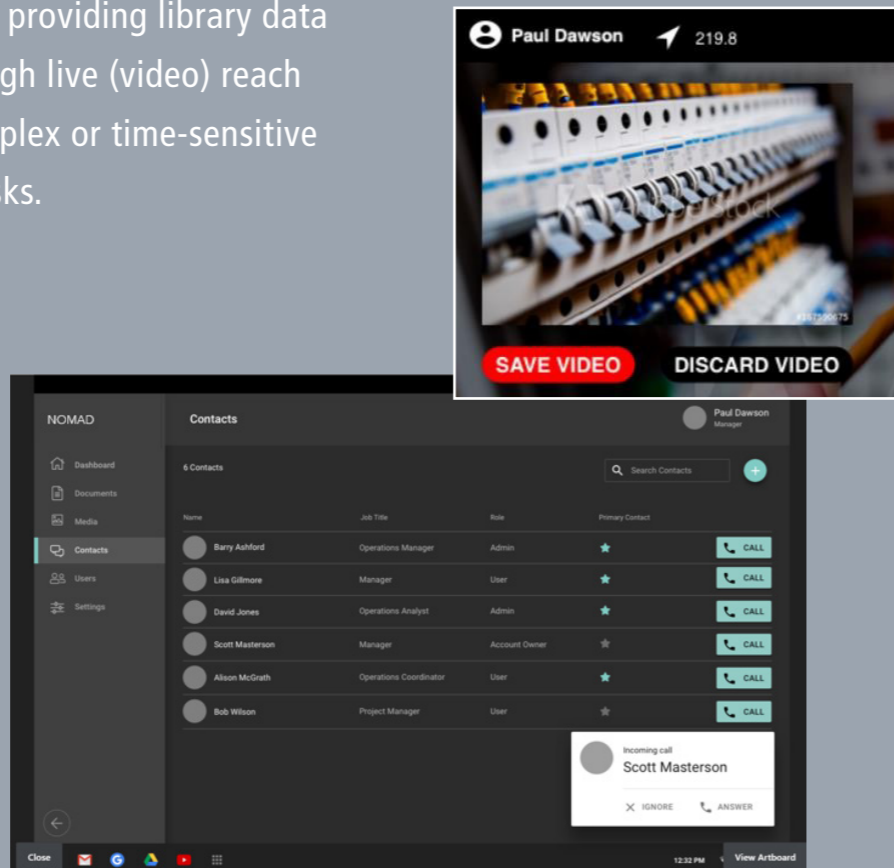
- Bridge Navigation SA enhancement (including Collision Avoidance)
- Unmanned vehicle oversight
- Boat Navigation
- Boarding Parties
- Weapons station oversight – Force Protection



remote support

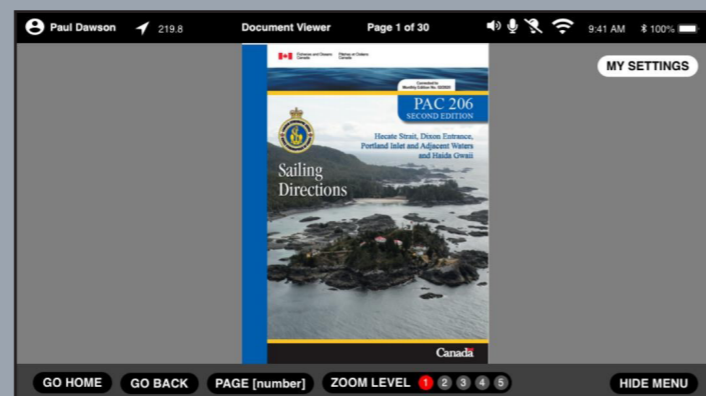
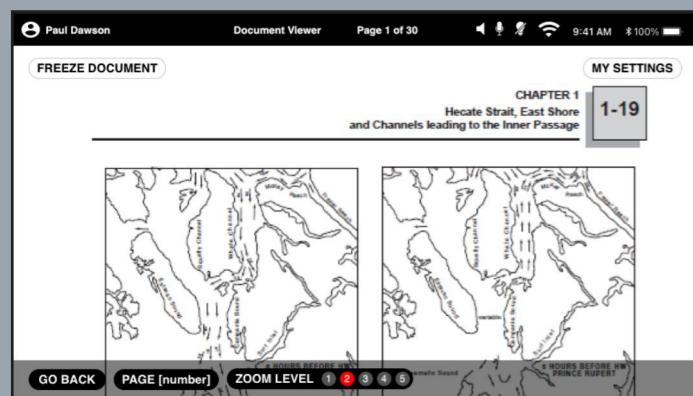
NOMAD functionality easily translates to other embarked engineering and logistics activity, by providing library data (e.g. maintenance manuals) or through live (video) reach back to OEMs when conducting complex or time-sensitive repair, maintenance and upgrade tasks.

- Engineering – Maintenance, defect rectification, reach-back
- Field Engineering Support – remote operations
- Factory build support
- Tele-medicine
- Global access to live or recorded information



document viewer

Geotag documents to Chart location and Pilotage plan



HEADSET



- Lightweight, IP65, rugged headset
- Wireless connectivity with voice activated menus
- Recording enabled
- Video and audio call facility to base station (optional)
- Mounted Light (with Red filter option)
- Video Camera (IR optional)
- Left or right viewing options
- Compatible with glasses or sunglasses
- Low light level visual display
- Unimpeded sight; eye display mount adjustable to below eye-level
- Compatible with ECPINS Warship and ECPINS Submarine
- Memory 256GB
- Battery endurance 6 Hours (hot swappable)
- Compatible with Bump Caps, Military Helmet Mk 7, Gecko Mk 10 and AGRs



26 Navies
700+ Ships

8 Navies
Fleetwide

18 Classes
Submarines



OSI Maritime Systems



www.osimaritime.com
info@osimaritime.com

400 - 4585 Canada Way
Burnaby, BC, V5G 4L6
Canada

Telephone: +1 778-373-4600
Fax: +1 778-373-0027

9 - 10B Dragoon House
Hussar Court, Waterlooville
Hampshire PO7 7SF
United Kingdom

Telephone: +44 (0) 2392 256 316