

IMMS

Integrated Mission Management System

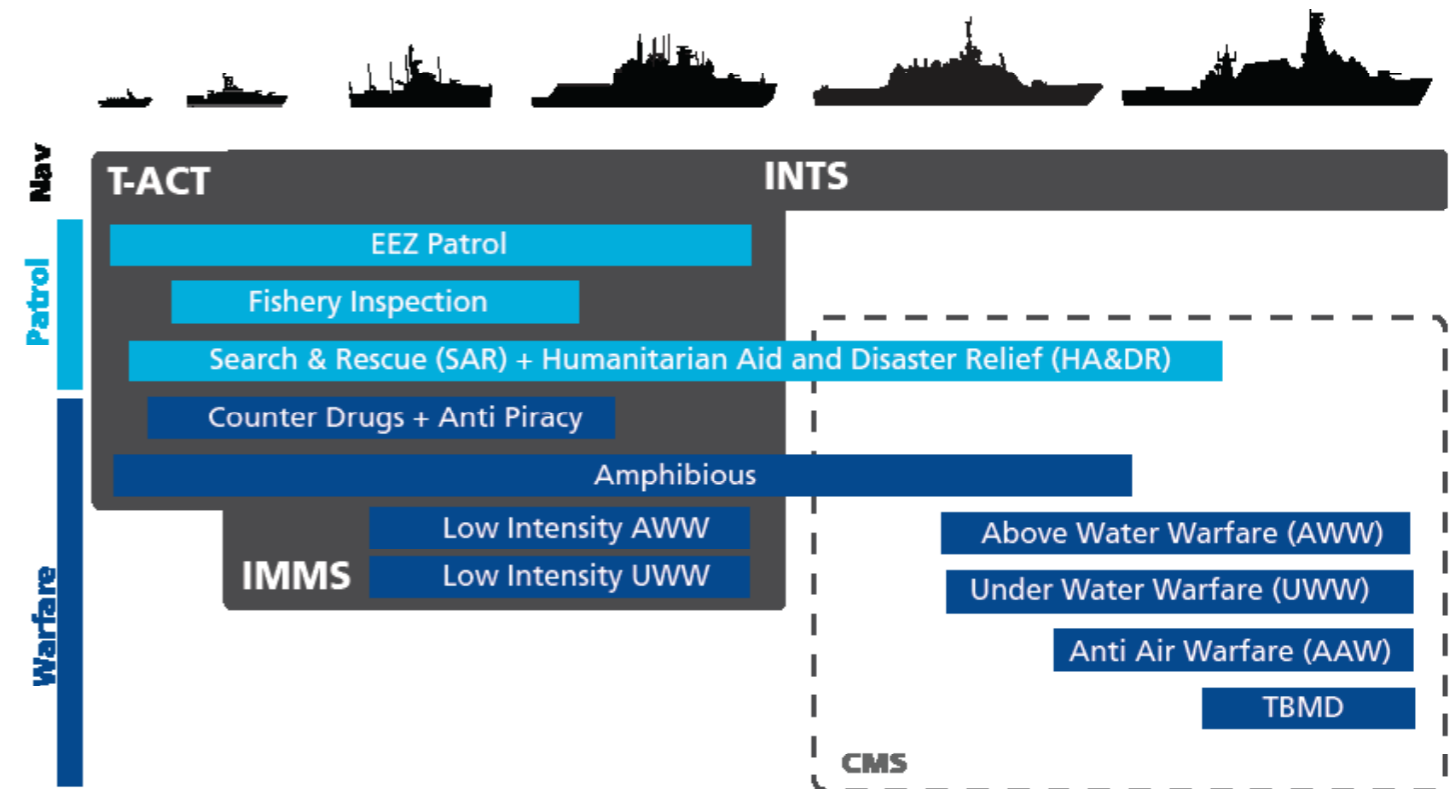


What is IMMS?

IMMS (Integrated Mission Management System) is a **Command Aid C2 system**, bringing enhanced tactical mission support to WECDIS. Tailored for Patrol Boats, Ocean-going Patrol Vessels and Auxiliaries executing patrol missions and occasionally supporting low-intensity warfare.

It is built on OSI's **ECPINS**; world-leading WECDIS software, featuring dedicated software functionality modules for **Patrol Missions, Above Water Warfare support, Under Water Warfare support** and Amphib Support. Necessary hardware, sensors and, if applicable, effector systems and integration complete the full integrated solution.

Front page - IMMS is installed on the 3x South African Navy MMIPV, designed and built by Damen.



Integrated Mission Management System

- Recognized Maritime Picture
- Dedicated Patrol Mission functionality
- Above Water Warfare functionality module
- Optional Underwater Warfare functionality module
- Warfare system integration, e.g.:
 - Multiple position sources, navigation radar, (W)AIS, ADSB
 - FC radar, EO, ESM, Sonar, TDL
 - Gun, decoy

Powered by ECPINS WECDIS

- STANAG 4564 WECDIS functionality
- Military grade, proprietary chart engine
- Advanced track management
- SAR, Small Craft and Aircraft modules
- Powerful proprietary Navigation and Tactical Data Distribution Unit (NavTacDDU)
- Secure Data Exchange with OSI Small Craft system (T-ACT)

**Integrated
Mission
Management
System**

Patrol Module

- Full WECDIS functions
- Full Radar integration
- Full WAIS integration
- Military grade chart engine

- Dedicated non-combat GUI
- Commercial AIS symbology
- Advanced track management
- Rule based triggers
- Advanced track filtering
- Relation mapping to shipping database

- TDL integration (optional)
- ESM integration (optional)
- ADSB integration (optional)
- EO integration (optional)

SAR Module

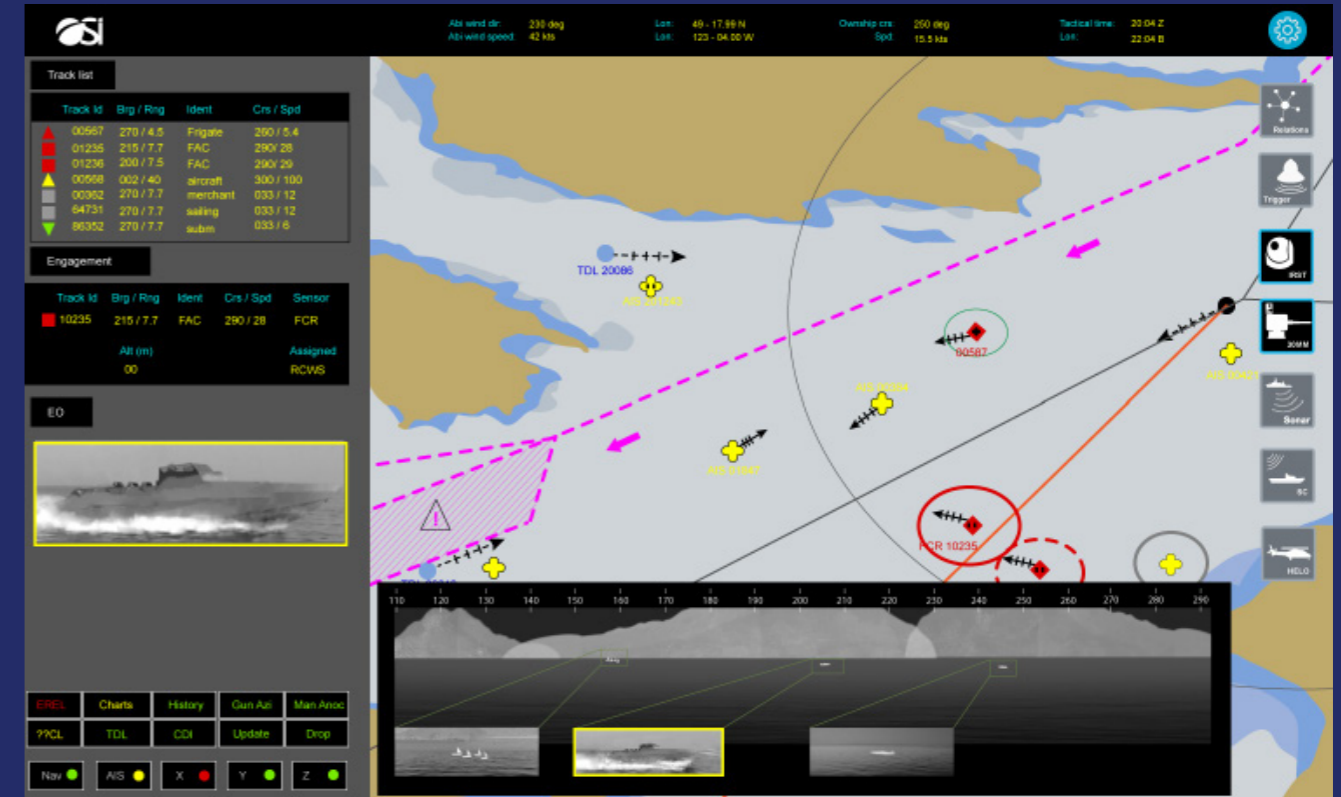
- SAR patterns

Aircraft Coord Module

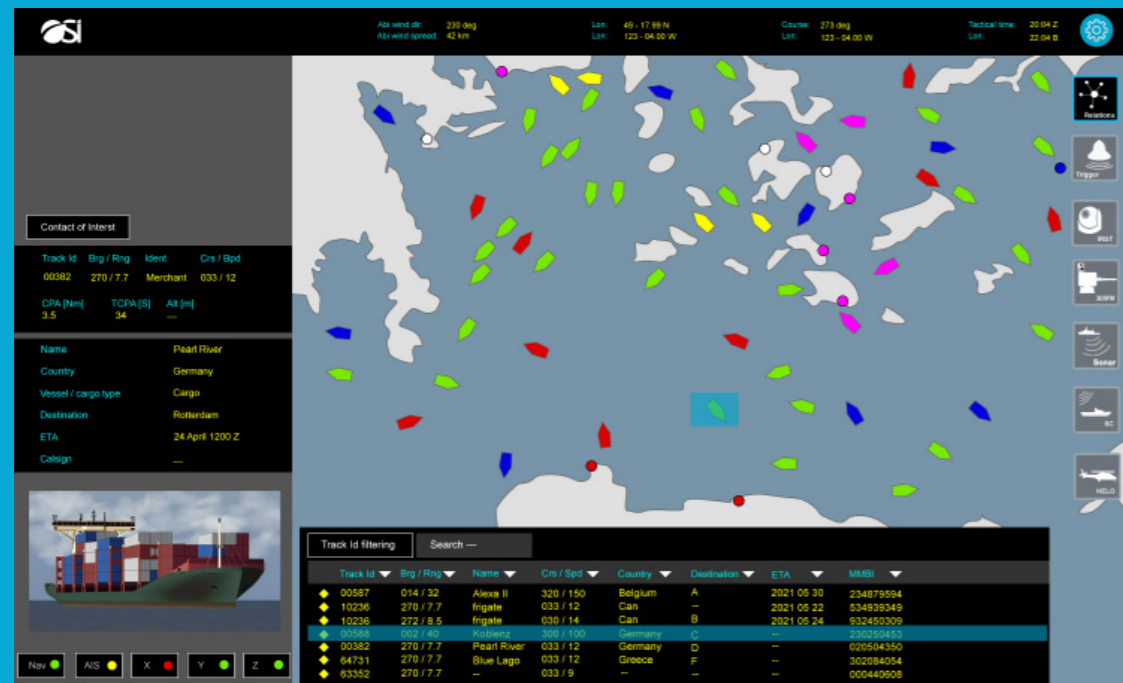
- Ship Helicopter Operating Limits
- Ship UAV Operating Limits

Small Craft Coord Module

- Planning & coordination
- Blue Force Tracking (BFT)
- Secure data exchange



Typical IMMS combat GUI using MIL-STD track symbology, and showing Threat Ranking, Gun Engagement support and EO functionalities.



Typical IMMS non-combat GUI using commercial AIS track symbology, and showing relation mapping function.

AWW Module

- Combat GUI
- Tactical planning tools
- AWW sensor support
- Threat Ranking
- Tactical Data Link (TDL) integration (optional)
- ADSB integration (optional)
- EO camera integration (optional)
- Weapon support

UWW Module

- Combat GUI
- Tactical planning tools
- UWW sensor support
- TDL integration (optional)
- 3D (optional)
- Thin Line Array support (optional)
- Target Motion Analysis (optional)
- Weapon support (optional)

	Small Craft	PB	OPV light	OPV
ECPINS WECDIS (INTS)		O	O	O
ECPINS High Speed Nav (TACT)	X			
ECPINS chart engine	X	X	X	X
Patrol + SAR module		X	X	X
AWW module		O	X	X
UWW module			O	O
Small Craft coordination module		O	O	O
Aircraft coordination module			O	O
Navigation / Surveillance Radar	O	X	X	X
W-AIS	X	X	X	X
ADSB		O	O	O
EO / IRST	O	O	X	X
C-ESM / R-ESM		O	O	X
Secure Data Exchange	O	O	O	O
TDL		O	X	X
FC radar			O	X
Sonar	O		O	O
Decoy	O		O	O
Weapon Integration		O	O	X
NavTac DDU		O	X	X
INS	O	O	O	X
Workstations / consoles	1-2	2	2-4	3-6
Planning table				O

O: optional X: included

Scalable Solutions

- Extendable with extra modules and systems to fit for Small Craft up to OPV and Auxiliaries
- Interoperable with INTS and TACT (OSI's Warship IBS and Small craft C2 systems)

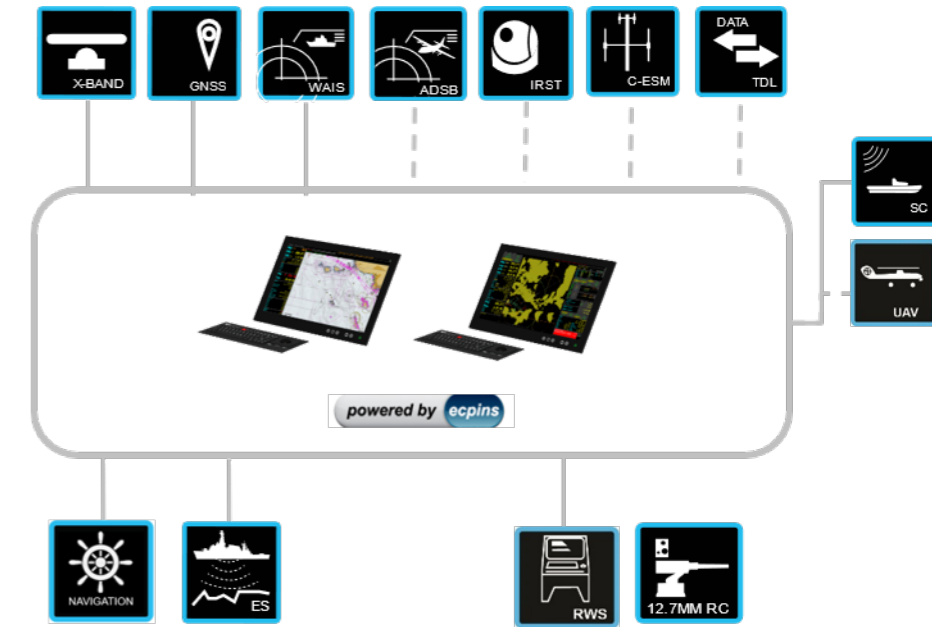
Designed To Cost

- Basic functions based on WECDIS
- Limited functional system integration
- Optimised sensor and effectors
- Use of local subsystems
- Local industrial participation

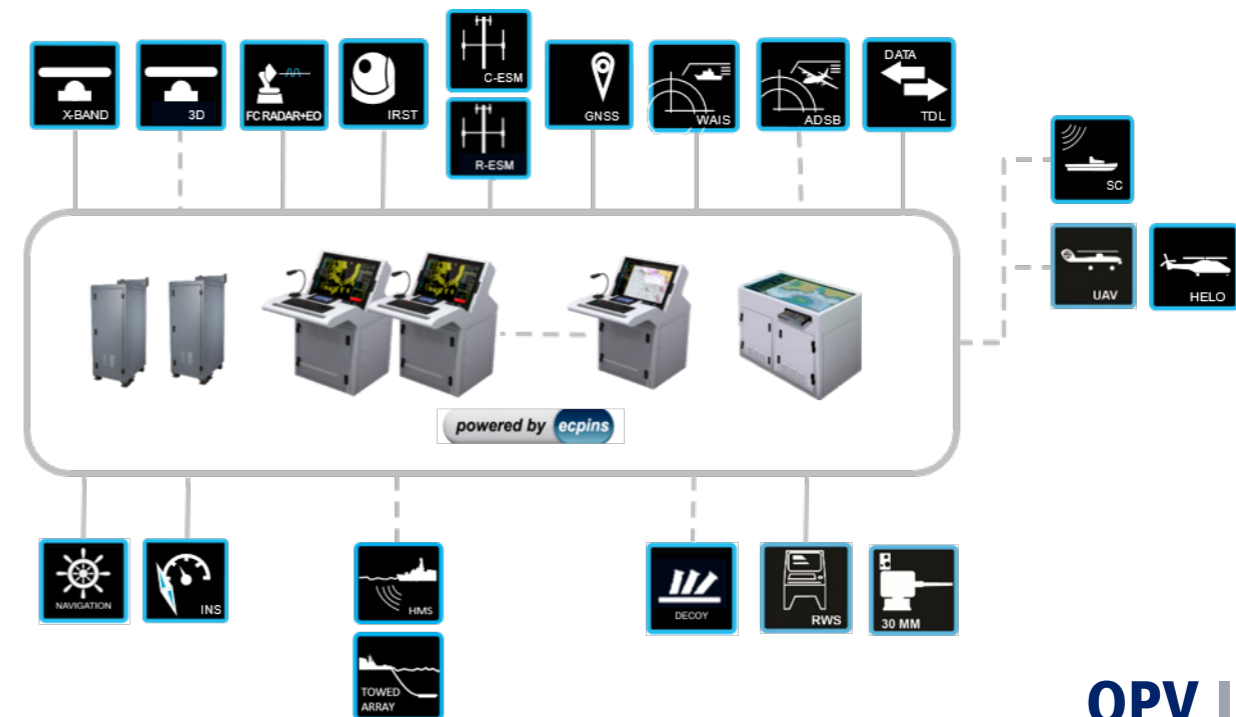
Configurable Solutions

- Base software only
- Full integrated solution including all subsystems and hardware
- Easily extendable with extra software modules

Patrol Boat IMMS



IMMS Total Solution



OPV IMMS

26 Navies 700+ Ships



8 Navies
Fleetwide

18 Classes
Submarines



OSI Maritime Systems



www.osimaritime.com
info@osimaritime.com

400 - 4585 Canada Way
Burnaby, BC, V5G 4L6
Canada

Telephone: +1 778-373-4600
Fax: +1 778-373-0027

9 - 10B Dragoon House
Hussar Court, Waterlooville
Hampshire PO7 7SF
United Kingdom

Telephone: +44 (0) 2392 256 316

Copyright © 2024 OSI Maritime Systems