

OSI Maritime Systems, a pioneer of Electronic Chart Display and Information Systems (ECDIS), is a market leader in marine navigation. For over three decades, OSI has provided a history of safe navigation and enhanced situational awareness that has resulted in increased operational capability for naval fleets worldwide.

**ECPINS® Digital Maritime Operations Plot (D-MOP)** is the market's first digital maritime operations plot with full navigation functionality and situational awareness on a large format display for suitable for team briefing.

ECPINS® D-MOP combines modern electronics and information technology into one powerful navigation tool for improved situational awareness. The navigation function is performed by ECPINS®, an warship electronic chart system that has been certified as the primary navigation system for the UK, Canadian, Danish, and Portuguese navies.

ECPINS® Digital Maritime Operations Plot (D-MOP) is the market's first digital maritime operations plot with full navigation functionality replacing the electromechanical Ship's Navigation and Plotting System (SNAPS).



### KEY FEATURES & BENEFITS

#### User Friendly

- Designed from direct customer feedback

#### Intuitive Chart Display

- Supports all raster and vector chart formats (multi fuel)
- Multiple charts on screen integrate into a single "mosaic" display with no borders or seams – creating an unspoiled, complete map
- Convenience and time savings with fast multiple chart loading and display
- Multiple color selections for effective day and night use
- Easy to view with automatic chart de-cluttering based on display scale
- Large fully IMO compliant 46" widescreen display

#### Enhanced Features

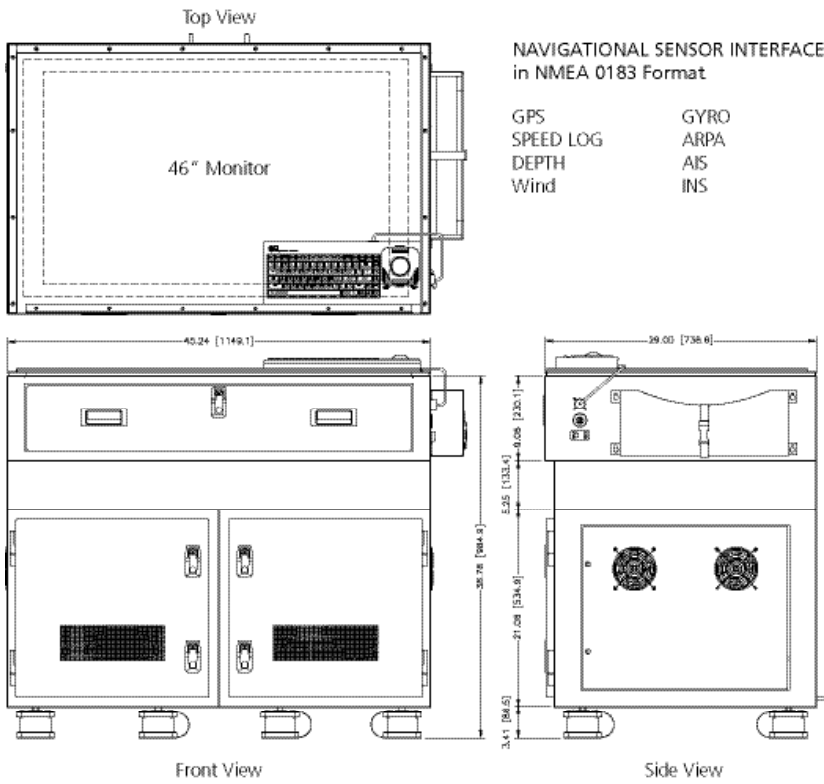
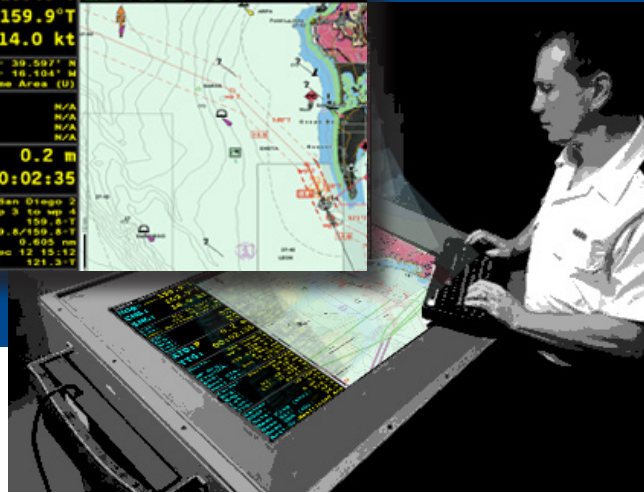
- Waterspace Management (WSM) plotting and display
- Advanced Operator Contacts for LOP or GOP construction and management
- Weapons ARCS
- MIL 2525C Contacts
- 4W Grid
- Accepts track messages from other systems including AIS and ARPA

#### Other Features

- Table Top version mounts on top of existing chart tables
- Console version includes base cabinet with equipment rack



The LOP can be expanded to become an extension of the Recognized Maritime Picture. Long range picture compilation and intelligence assessment can be accomplished from a single control station.



24 Navies, more than 600 Ships  
Fleetwide across Eight Navies  
Eighteen Classes of Submarines



**Canada**  
4585 Canada Way, Suite 103  
Burnaby BC V5G 4L6  
Canada  
Phone: +1 778 373 4600

[www.osimaritime.com](http://www.osimaritime.com)  
[info@osimaritime.com](mailto:info@osimaritime.com)