



# COMMON OPERATING PICTURE

powered by **ecpins**

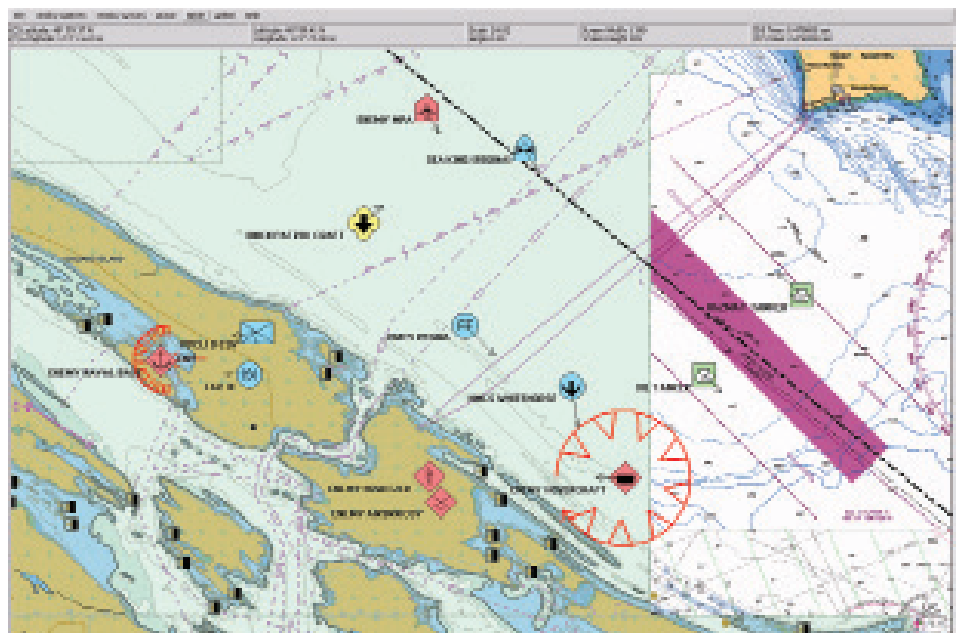
**With over 30 years of leadership in marine navigation, OSI offers navigation and tactical solutions combining advanced features and extensive experience in warship technology, making us the fleet standard for many NATO and allied navies including Canada, UK, Australia, Denmark, Portugal, Netherlands, and New Zealand.**

The COP product line provides a sensor-oriented, high-performance display of geospatial and tactical data in a common operational picture (COP) for situational awareness and interoperability. It is a collection of client server applications with map, image and tactical display capabilities.

COP PL integrates information from a variety of geospatial and tactical data sources (sensors, land maps, nautical charts, photo imagery and special military information) into a single display strengthening a user's analytical and decision-making ability.

With COP PL as a foundation, a battle commander can obtain and integrate theatre data and the tactical picture, whether at the field command post, in an airborne platform or on board a ship. All aspects of the situation -- the terrain, the location of forces, other friendly forces, movements of enemy forces and other critical information -- can be seen in a single view.

COP products also allow customers to share data across command and control systems, solving the growing requirement for interoperability among allies and land-based, maritime and air forces. Offshore Systems' COP products provide decision-makers with timely and relevant geospatial data, track data and situational awareness.



OWNSHIP WITH GHOSTSHIP SHOWING NAVIGATIONAL TOOLS

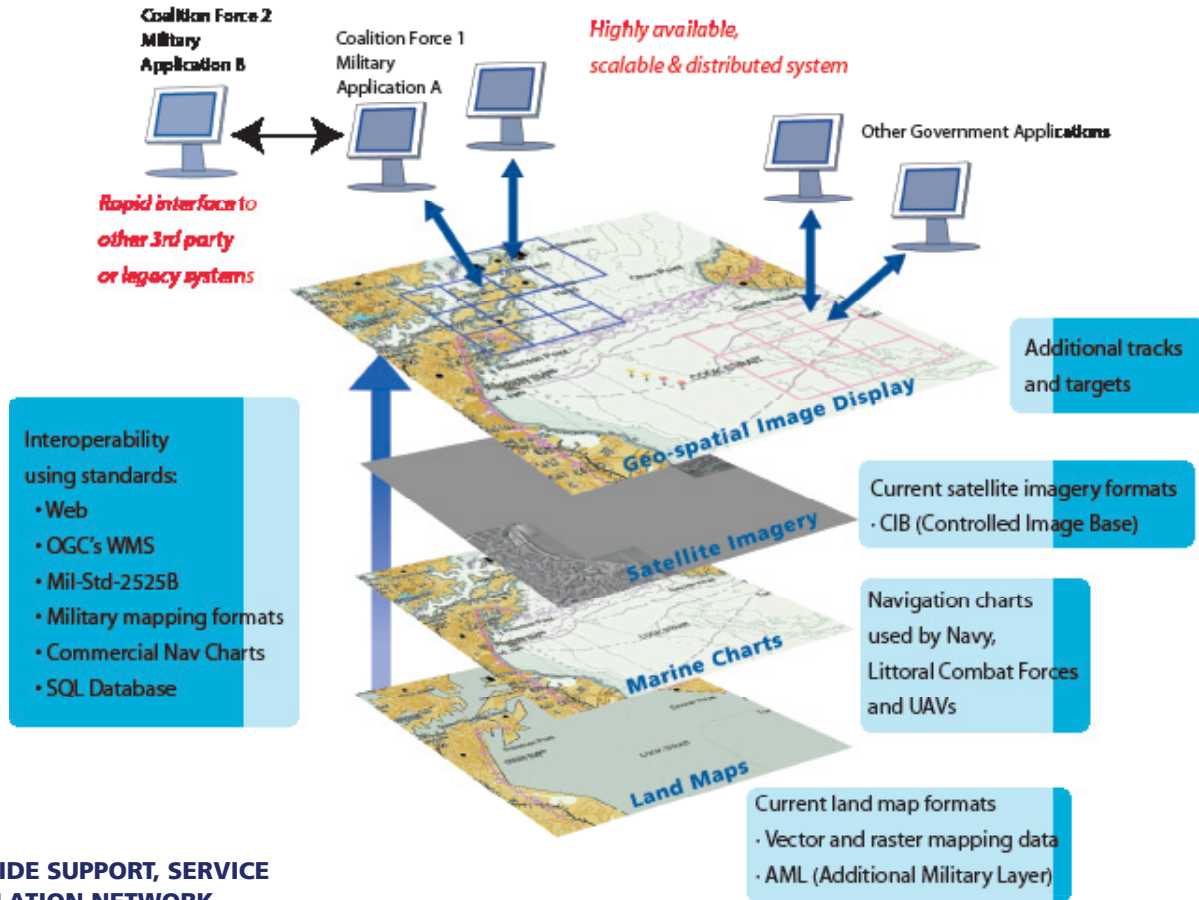
## KEY FEATURES & BENEFITS

### Facilitates Interoperability

- Military Forces
- Coalition Partners
- Government Departments
- Intelligence Agencies
- Facilitates integrated situational awareness among diverse COP capabilities
- Reduces risk by allowing the distribution of geospatial and tactical data across traditional joint force/coalition boundaries
- Enabling technology that is rapidly deployable and cost effective
- Helps build a situational awareness bridge between critical navigation systems and operational command and control systems
- Adds value to existing command and control systems by enhancing geographic situational awareness

## PROVIDING THE COMPLETE BATTLE PICTURE

Legacy command and control systems may have limited abilities for displaying map information, and many simply display coloured symbols on a black background. COP products enable these systems to overlay symbols on any combination of land maps, nautical charts or satellite imagery. The detailed geographic situation is precisely and accurately displayed on a single monitor.



## WORLDWIDE SUPPORT, SERVICE & INSTALLATION NETWORK

OSI is dedicated to providing customers with best in class customer support, service, and installation. Our 24/7 support line provides customers with the peace of mind that an Offshore Systems technician stands ready to support their queries.

We have a qualified team of professionals to assist with service, installations, required annual surveys and re-certifications.

Our worldwide network of personnel and leading partners are available to service customers from any location in the world.



OSI Maritime Systems



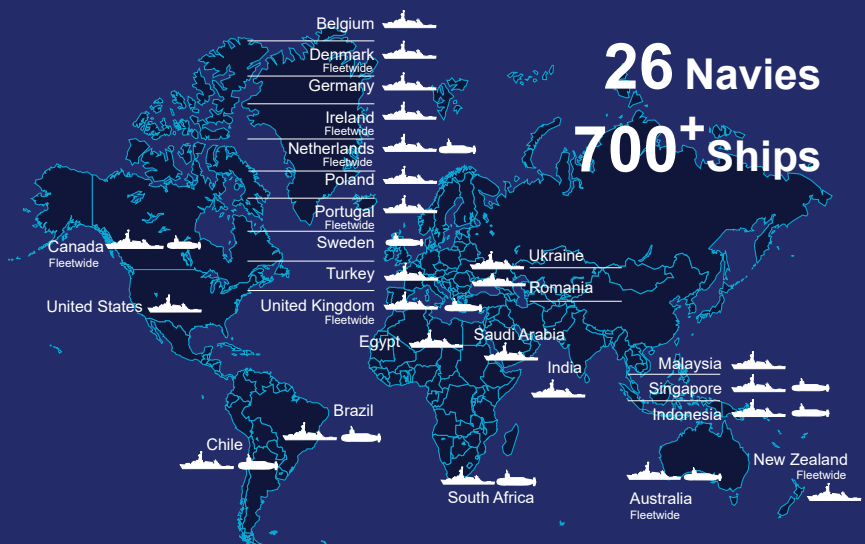
www.osimaritime.com

info@osimaritime.com

400 - 4585 Canada Way  
Burnaby, BC, V5G 4L6  
Canada

Telephone: +1 778-373-4600

Fax: +1 778-373-0027



**8** Navies Fleetwide

**18** Classes Submarines

Copyright © 2024 OSI Maritime Systems